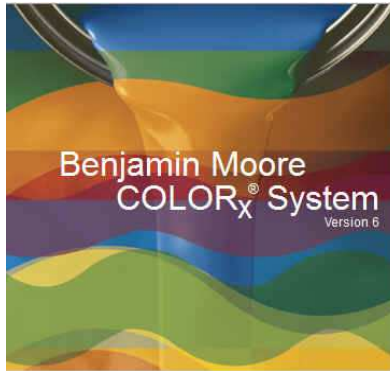


Benjamin Moore & Co. Moore's COLOR_x® System Release Notes & Installation Guide Version 6.25.3000



COLOR_x version 6.25.3000 contains the changes listed below. It also contains updated Benjamin Moore prescriptions. For a complete list of the updated prescriptions see page four.

Discontinued Products

Several old discontinued products have been removed from the Select Product Code drop down list. If needed, these products can be reactivated back on the product drop down list by following the steps beginning on page two. A list of the products that were removed can be found on the last page of these Release Notes.

Documentation: Operator's Manual and Quick Start Guide

The COLOR_x documentation can be found on the system after the software is installed. They are in Adobe® pdf format and can be found in the Program Files\Benjamin Moore & Co\ColorTech\Documentation\COLORx folder. They include the operator's manual (Colorx.pdf) the and the quick start guide (quick start.pdf.)

Help

While in the COLOR_x application, you can view the Operator's Manual and the Quick Start Guide by clicking on Help, then choose COLOR_x Help for the manual or COLOR_x Quick Start.

Competitive Color Prescriptions in COLOR_x

We have amassed an extensive collection of colors from our competitor's color merchandise. This information is available in our Color Search option in COLOR_x. To see if a color exists, simply follow the same procedure you would for a Benjamin Moore color. Enter a color number or name,

along with a product, and either select an individual company or check the “Search All” box above the Select Company drop down list.

Unlike a Benjamin Moore color which displays a prescription created and tested by our Color Prescribing Lab, we store just the measurement of the competitive color. That measurement is run in our color matching application to generate a color prescription the same as if you measured a custom color with a spectrophotometer and calculated a match.

Therefore, when a customer requests a match to a competitive color, a retailer should follow this procedure.

First, look up the color in COLOR_x and determine if we have it in our system. If it is, a prescription will be calculated and displayed. Click on the button “Closest BM Color”, this will list the five closest Benjamin Moore colors. Suggest to the customer that they look at our closest colors and see if that meets their color requirements. This has two benefits, if the color is acceptable, then you have a tested Benjamin Moore prescription to make the color and you have changed a competitive color specification to a Benjamin Moore color specification.

Second, if you or the customer has a sample of the competitive color merchandise then match the color merchandise just as you would match a custom color. Since the customer will be judging the color to the merchandise sample that should be your target. Depending on the age and condition of the merchandise, it may not represent what we have stored in COLOR_x.

Finally, if the customer does not like our closest color and no sample of the color is available then use the calculated match in COLOR_x.

If you have any questions, please contact your Color Technology Rep. or call 800-809-9213.

Reactivate Products in the Select Product Code Drop Down Window



Pictured above is the **Select Product Code** drop down window on the main screen

To reactivate any product that has been turned off, follow the steps below.
From the main screen, click on **File**. Now choose **Modify Store Options** as shown in figure 1.

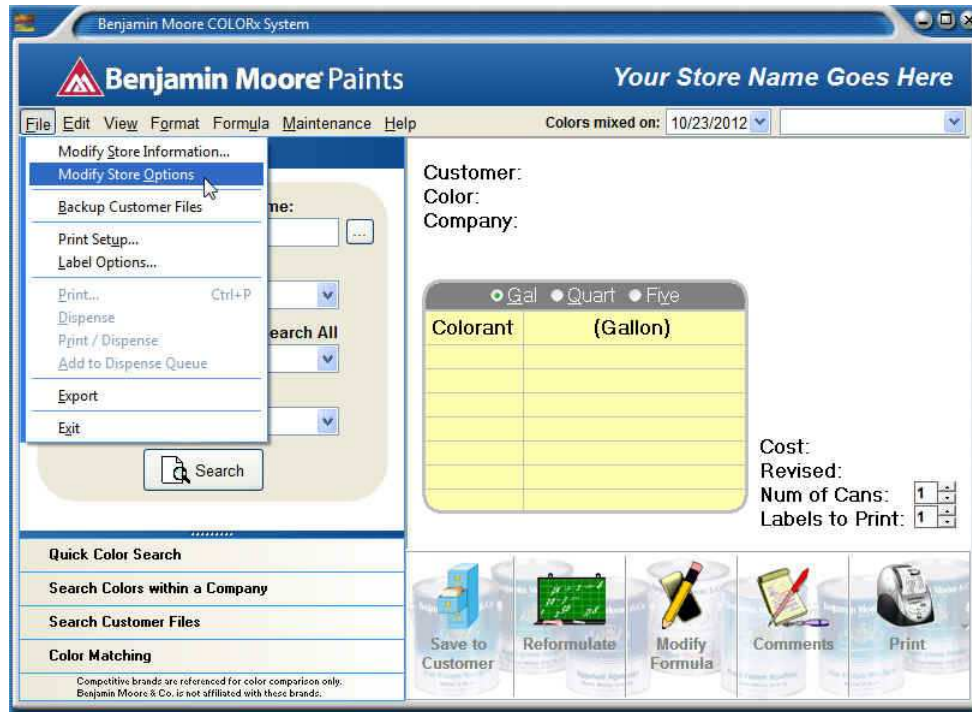


Figure 1

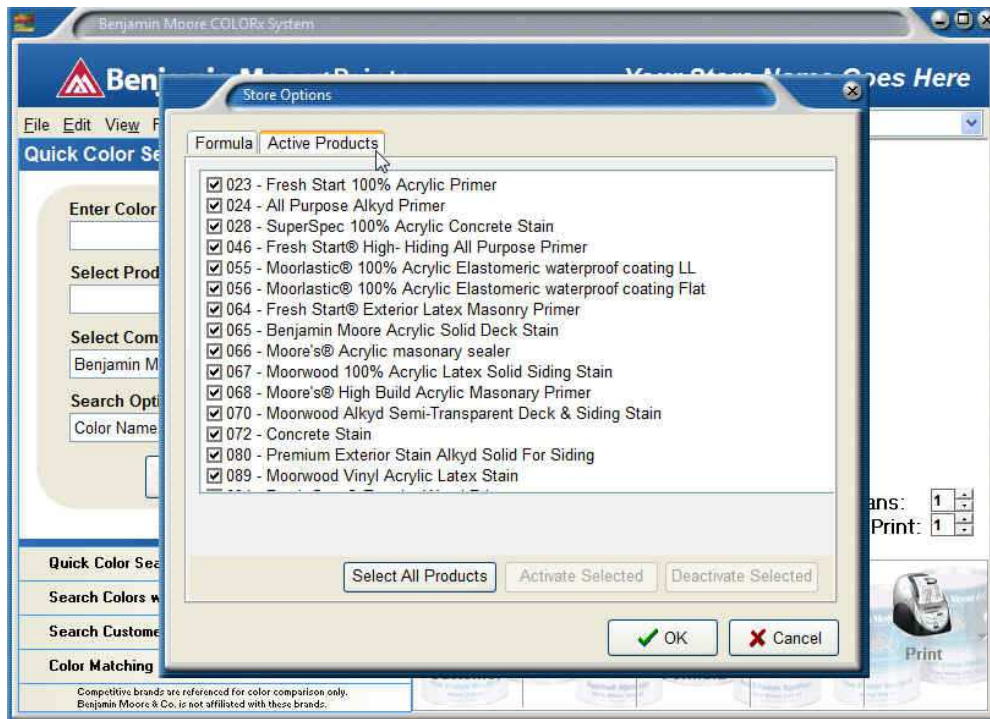


Figure 2

Next, click on the **Active Products** Tab and click to place a check mark in the box next to the product(s) that you wish to activate. Then click on the OK button as shown above.

The product(s) will now appear in the **Select Product Code** drop down list and will be available for color matching and prescription lookup.

Prescription Changes since ColoRx Version 6.25.1000 (United States)

Many prescriptions for products 550 (all bases), N1852B, N5361X, N5371X, N5381X, N5391X and N5401X have been modified. Please refer to the revision date when calling up these prescriptions. A revision date after 8/27/12 indicates a change in the prescription since ColoRx version 6.25.1000.

The following prescription has been modified in Aura exterior products: 2072-10

The following prescriptions have been modified for product 147: 2134-10, HC-70

The following prescriptions have been modified for product 148: 2134-10, HC-70

The following prescription has been modified for product 403: AF-650

The following prescription has been modified for product 522: 2128-10

The following prescriptions have been modified for product 524: 2093-10, 2093-30

The following prescription has been modified for product 526: 2128-10

The following prescription has been modified for product 532: 2128-10

The following prescriptions have been modified for product 547: 2086-50, oriental silk

The following prescriptions have been modified for product 548: 244, 983, 984, 2106-50, 2113-50, HC-89

The following prescriptions have been modified for product 549: 1453, AF-150

The following prescriptions have been modified for product 638: 1190, HC-50

The following prescription has been modified for product 640: 2115-20

The following prescriptions have been modified for product 792: 1127, 2134-10, HC-70, HC-73, cottage red

The following prescriptions have been modified for product 793: 2134-10, HC-70

The following prescription has been modified for product 796: HC-47

The following prescription has been modified for product 799: 2132-10

The following prescriptions have been modified for product C274: 2110-40, 2138-50

The following prescriptions have been modified for product N221: HC-77, AF-340

The following prescription has been modified for product N310: 2138-50

The following prescription has been modified for product N319: AF-590

The following prescription has been modified for product N322: 2138-50

The following prescription has been modified for product N402: AF-650

The following prescription has been modified for product N536: AF-140

The following prescriptions have been modified for product N539: 2107-10, AF-650

The following prescription has been modified for product N540: 2132-10

The following prescriptions have been modified for product N794: 2134-10, HC-70

The following prescriptions have been modified for product W221: 230, 1077, HC-16

The following prescription has been modified for product W625: HC-47

The following prescription has been modified for product W627: 2132-10

Prescription Changes since ColoRx Version 6.25.1000 (Canada)

Many prescriptions for products K1852B, K5361X, K5371X, K5381X, K5391X, K5401X and K550 (all bases) have been modified. Please refer to the revision date when calling up these prescriptions. A revision date after 8/27/12 indicates a change in the prescription since ColoRx version 6.25.1000.

The following prescriptions have been modified in Aura exterior products: 2072-10, OR-460

The following prescription has been modified for product F310: 2138-50

The following prescription has been modified for product F319: AF-590

The following prescription has been modified for product F322: 2138-50

The following prescription has been modified for product F403: AF-650

The following prescriptions have been modified for product F794: 2134-10, HC-70

The following prescriptions have been modified for product K274: 2110-40, 2138-50, OR-149

The following prescription has been modified for product K402: AF-650

The following prescriptions have been modified for product K522: 2128-10, OR-423

The following prescriptions have been modified for product K524: 2093-10, 2093-30

The following prescriptions have been modified for product K526: 2128-10, OR-423

The following prescriptions have been modified for product K532: 2128-10, OR-423

The following prescription has been modified for product K536: AF-140

The following prescriptions have been modified for product K539: 2107-10, AF-650

The following prescriptions have been modified for product K540: 2132-10, OR-427

The following prescriptions have been modified for product K542: CC-604, OR-8

The following prescriptions have been modified for product K547: 2086-50, oriental silk

The following prescription has been modified for product K549: AF-150

The following prescriptions have been modified for product K552: CC-334, HC-16, OR-77

The following prescriptions have been modified for product K625: HC-47, OR-83

The following prescriptions have been modified for product K627: 2132-10, OR-427

The following prescriptions have been modified for product K638: HC-50, OR-220

The following prescriptions have been modified for product K640: 2115-20, OR-151

The following prescriptions have been modified for product K792: 2134-10, HC-70, HC-73, OR-65, cottage red

The following prescriptions have been modified for product K793: 2134-10, HC-70

The following prescriptions have been modified for product K796: HC-47, OR-83

The following prescriptions have been modified for product K799: 2132-10, OR-427

Moore's COLOR_x® System Installation Guide

The Benjamin Moore COLOR_x Prescription Book and Color Matching System programs are incorporated into a single software package. It is available on the Benjamin Moore Retailer Portal, Mybenjaminmoore.com or on a CD and runs under the Windows® XP, Windows® Vista, and Windows® 7 operating systems.

Minimum System Requirements

- Intel Pentium® processor 500 MHz or higher.
- 1 GB of RAM
- 750 MB of free hard disk space.
- CD or DVD Drive
- Video card capable of supporting 16M colors
- Printer
- Serial or USB port for spectrophotometer
- Windows® XP, Windows® Vista or Windows® 7

Installation

If you are downloading COLOR_x from the Benjamin Moore Retailer Portal, mybenjaminmoore.com, read the "COLOR_x Download Instructions." This will instruct you how to download and install COLOR_x on your computer.

To install COLOR_x from a CD, you must have the Windows desktop displayed. If there are any other applications running, they should be closed before attempting to install the program. If your system has any automatic virus detection software enabled, it should be disabled before installing.

Insert the CD labeled "COLOR_x System" into the CD drive.

The installation procedure will automatically start and bring you to the **Welcome Screen**.

If the installation does not automatically start, click on the "Start" button, usually found at the lower left corner of the screen. The primary menu will pop up. Click on "Run..." and the "Run" dialog box will display. Type "**D:\SETUP**" (where "**D:**" is the designated drive letter for the CD) on the "Open" line and click on "OK".

The Setup Wizard will guide you through the installation.

License Agreement

As you start the installation, the License Agreement screen appears. Be sure to read this license agreement. If you disagree with the terms of the agreement, then click on the Cancel button to exit the installation. If you agree with the terms, then check the appropriate box to continue the installation. The installation will prompt you to select the software region, United States or Canada. The default is United States.

After the successful installation of the software you may be prompted to reboot your system.

Note: If you have a previous version of COLOR_x® 6, this installation will not write over any stored samples or stored customers. They can be still be accessed.

List of discontinued products removed from the Select Product Code drop down window

B400	M22	Z163
B401	M24	Z235
B402	M26	Z22
B508	M28	Z24
B511	M29	Z26
B512	M30	PF62
B513	M42	PF63
B514	M43	
B522	M73	
B524		
B526		
B528		
B530		
B548		
B549		
B551		
B629		
B631		
B632		
B634		
B638		
B639		
B640		
B791		
B792		
B793		
B794		